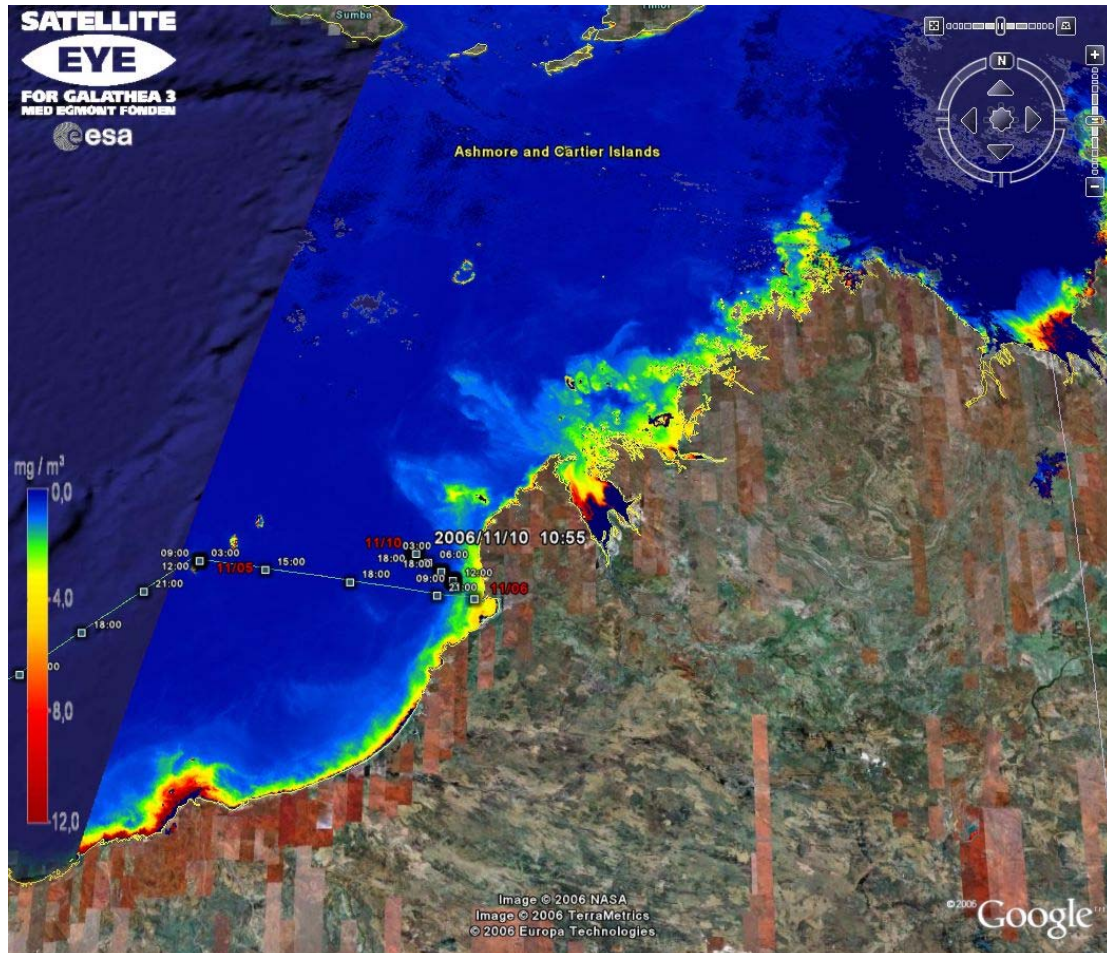


Algae near Broome in Australia



Algae near Broome in Australia seen from Envisat MERIS 9 November 2006.

What can you see?

Generally, low concentrations of algae are seen (in blue colours). In a few places some algae blooming (in green and yellow) is found along the northwestern coast of Australia. In particular, high chlorophyll content is found in three places. The first is in the southeastern part of the image. The second place is centrally in the image near Broome where the ship Vædderen of the Galathea 3 expedition just has passed, and the third place is in the northeasterly part of the image. In all three cases the blooming appears near river outlets where nutrients are carried out from the land. The rivers are called: "Oakover", "Eitzroy" and "Durack".

Technical information

The algae images are produced using a complicated mathematical-physical model that



analysis the colour of the ocean very precisely, and it is based on the fact that chlorophyll in algae absorbs sunlight and therefore causes a lesser reflection of blue and red colours than would have appeared in the case of no algae.

There is more information on algae observed from satellite available on

http://galathea3.emu.dk/satelliteeye/projekter/phytoplankton/index_uk.html

It is possible to take the algae image into Google Earth using

<http://galathea.oersted.dtu.dk/GE.html>

and then select the image named below in the list of algae images:

[20061109_011027_MERIS_Australia-algal1.kmz](#)