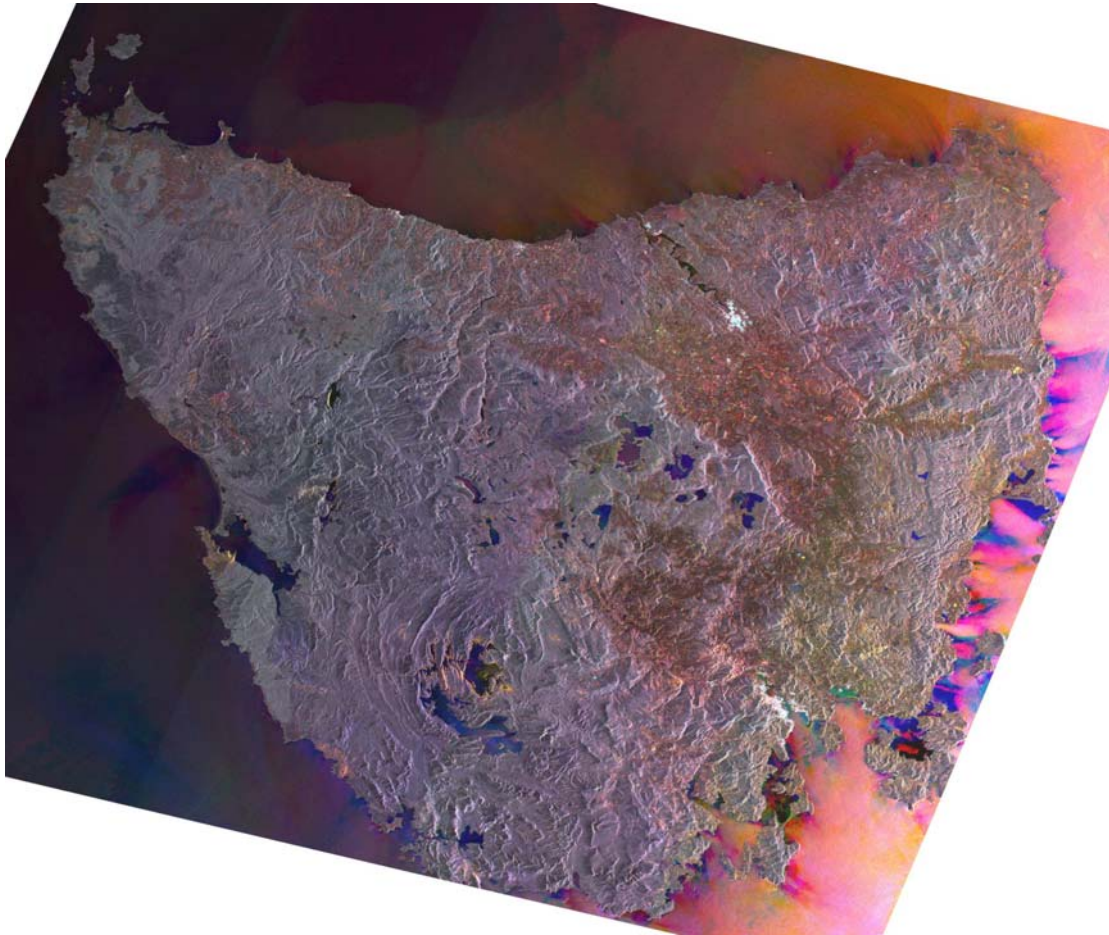


Weekly image: Week 48, 2006

Tasmania from Space



The Island of Tasmania seen with a Radar satellite eye.

The image is a combination of three acquisitions, 19th July (red) 21st April (green) and 6th January (blue) of the year 2003. It outlines sharply the complex coastline where as the colour of the island is for a large part grey, indicating the forested wilderness. The reddish-yellowing area however is the agriculture zone with colour points revealing large crop fields. Cities are brightly marked but restricted to Launceston in the centre and Hobart in the southeast and the cities along the northern coast. In the central south the proterozoic rock formation of the Prince of Wales Range form a huge eye: the Lakes of Pedder and Gordon. The colourfull east coast is merely the effect of strong winds especially on 6th January, roughening at that date also all the lakes on the island. In addition due the effect of the steep looking of the radar instrument the contrast is relatively enhanced in this section of the image, as winds are channeled by the valleys and blown out into the sea.



Technical information

Each of the 3 data sets used to produce this multitemporal image has been acquired by the ASAR (radar) in wide swath mode onboard Envisat in 2003 at about 23.22 UTC, or 09.22 Tasmanian time. The pixel size is 200m.